

Route 171

Updated: December 2011

Junction with Route 1 via 33rd South and Wasatch Boulevard to Route 4 in Parley's Canyon. To Wasatch Boulevard May 12, 1935; to Route 4 May 13, 1941.

1953 Description:

From Route 111 south of Magna easterly via Thirty-fifth South and Thirty-third South to Wasatch Boulevard, thence northerly to Route 2 in Parley's Canyon.

Approved by the 1963 Legislature:

1965 Description:

From Route 111 at Eighty-fourth West and Thirty-fifth South Streets easterly via Thirty-fifth South and Thirty-third South Streets to Wasatch Boulevard. **(*A) Scanned) 1/8/65

1965 Legislature:

A portion of this route transferred to SR-5 and jurisdiction of Salt Lake County.

1967 Legislature:

1969 Legislature:

1971 Legislature Description:

From Route 111 at Eighty-fourth West and Thirty-fifth easterly via Thirty-fifth South and Thirty-third South Streets to Route 215.

1973 Legislature: Description remains the same.

1975 Legislature: Description remains the same.

1977 Legislature: Description remains the same.

1979 Legislature: Description remains the same.

1981 Legislature: Description remains the same.

1983 Legislature: Description remains the same.

1985 Legislature: Description remains the same.

1986 Legislature: Description remains the same.

1987 Legislature: Description remains the same.

1988 Legislature: Description remains the same.

1990 Legislature: Description remains the same.

1992 Legislative Description:

From Route 111 at Eight-fourth West Street and Thirty-fifth South street easterly via Thirty-fifth South Street and thirty-third South street to Route 215 at the east-side belt route

1993 Legislature: Description remains the same.

1994 Legislature: Description remains the same.

1995 Legislature: Description remains the same.

1996 Legislature: Description remains the same.

1997 Legislature: Description remains the same.

Route 171 Cont.

1998 Legislative Description:

From Route 111 at Eighty-fourth West Street and Thirty-fifth South Street easterly on Thirty-fifth South Street and Thirty-third South Street to Route 215 at the east-side belt route.

1999 Legislature: Description remains the same.

2000 Legislature: Description remains the same.

2001 Legislature: Description remains the same.

2002 Legislature: Description remains the same.

2003 Legislature: Description remains the same.

2004 Legislature: Description remains the same.

2005 Legislature: Description remains the same.

2006 Legislature: Description remains the same.

2007 Legislature: Description remains the same.

2008 Legislature: Description remains the same.

2011 Legislature: Description remains the same.

*Refers to resolution index on the following page.

**Refers to Scanned Computer Resolution index on the following page.

Route 171

COUNTY/VOLUME & RESOLUTION NUMBER

A. Salt Lake Co. 1/120

DESCRIPTION OF RESOLUTION CHANGE

(A). Deletion -

(Portions) From 33rd South and Wasatch Boulevard
to SR-2.

RESOLUTION

State Routes 5 and 171

WHEREAS, with the completion of Interstate Projects near the vicinity of the mouth of Parleys Canyon it is deemed necessary to re-designate various portions of the State System of Highways in this area and

WHEREAS, that the portions of State Route 171 being deleted from the State System of Highways will no longer be justified as a part of the State System of Highways but nevertheless will still serve as a public road and

WHEREAS, to provide continuity in the State System of Highways,

NOW, THEREFORE, pursuant to Authority 12-27-12, UCA, AS AMENDED, it is hereby resolved as follows:

1. That State Route 171 will terminate at Wasatch Boulevard and 33rd South.
2. That with the deletion of State Route 171 from 33rd South and Wasatch Boulevard to State Route 2 near Stillman Bridge the portion of State Route 171, a section of the county road on Wasatch Boulevard and the new construction project on the south ramp connections to the belt route will be designated as State Route 5, which is the designation for the Belt Route.
3. That the portion of former State Route 171 from Wasatch Boulevard to the barricade a distance of 0.23 + - miles be transferred to the jurisdiction of Salt Lake County.
4. That by this action State Route mileage will be increased 0.1 + mile.

5. That Exhibit "A" attached herewith illustrating the action taken herewith is hereby incorporated as a part of this submission.

Dated this 8th day of January, 1965.

STATE ROAD COMMISSION OF UTAH

Ernest S. Balf

Chairman

Erwin G. Galt

Commissioner

Elias Strong

Commissioner

Arnes K. Bagley

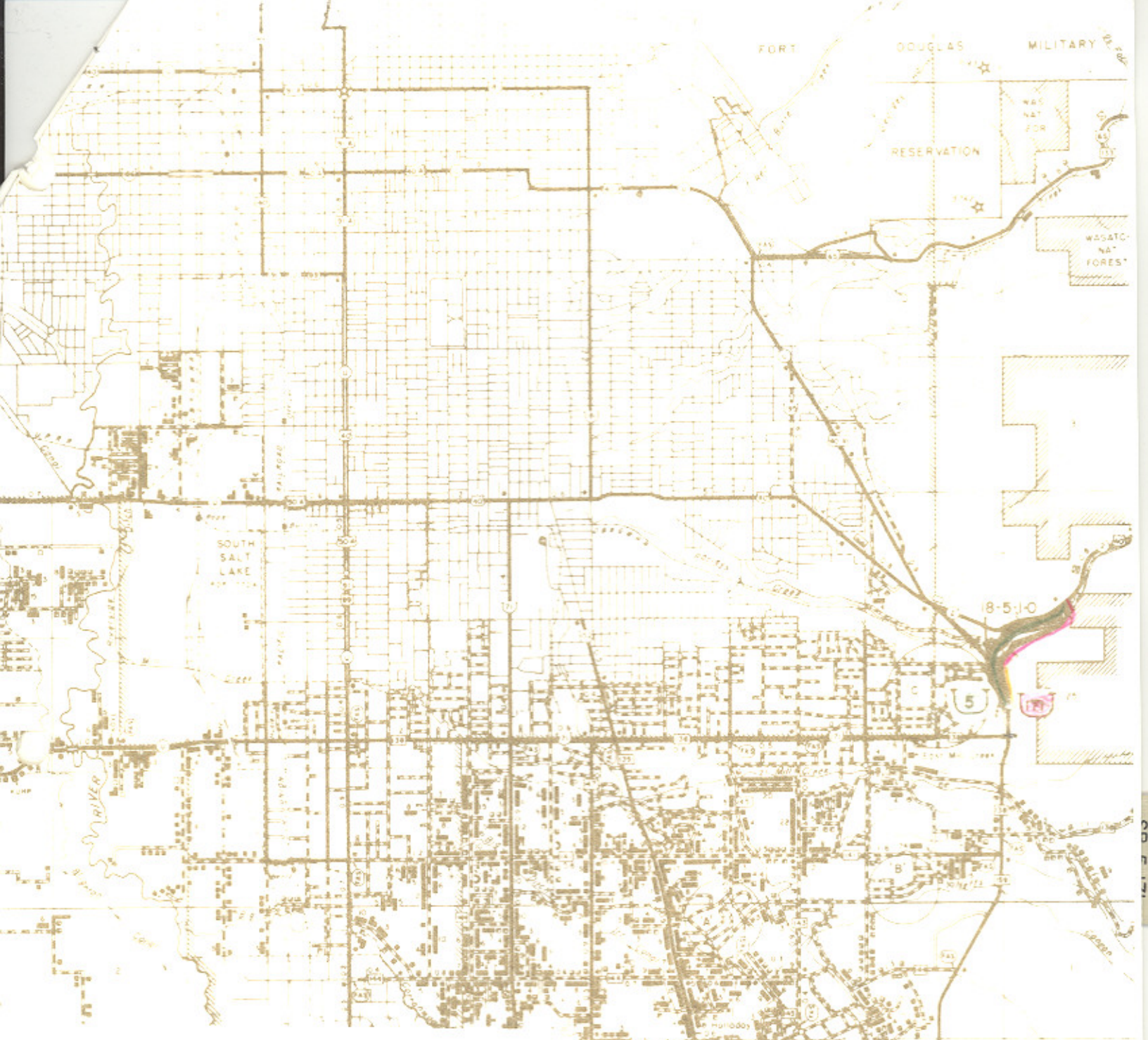
Commissioner

W. J. Smith

Commissioner




ATTEST:

Clarence J. Allred
Secretary





UTAH STATE DEPARTMENT OF HIGHWAYS
 Transportation - Research Section

STATE ROAD CHANGES

-  Addition to State Road System
-  Deletion from State Road System
-  Transferred to Local Jurisdiction

ROUTE DESIGNATION CHANGE

-  Existing Route Designation
-  Proposed Route Designation

Date Submitted _____

Date Approved _____

